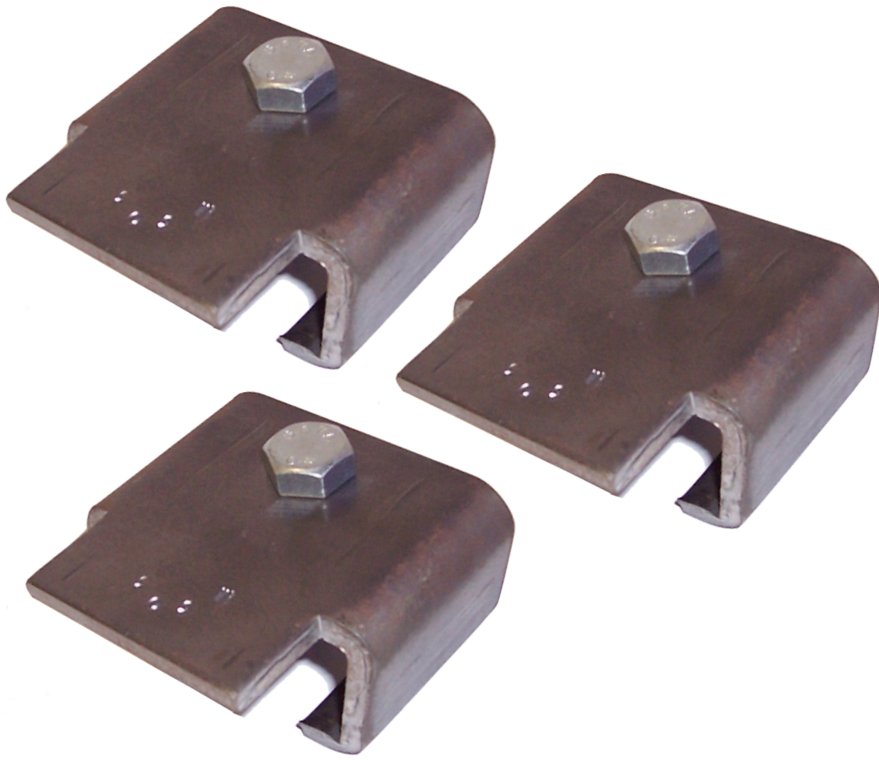
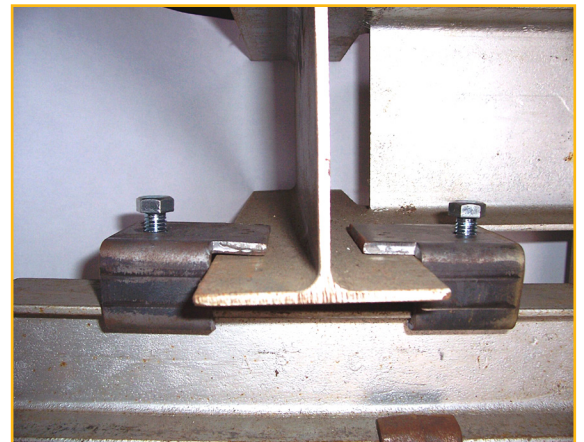
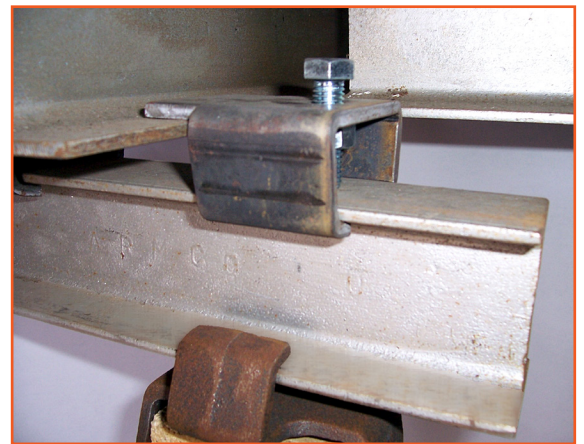


Flange-Lok[®]



Flange-Lok is a heavy-duty single-piece stamping for suspending 3, 4, or 5 inch refractory roof support beams for structural supports.



Benefits of Flange Lok:

- The M300 Flange-Lok series is a simple, fast way to put up refractory roof and support steel.
- The M300 Flange-Lok series metallic is rotated onto the junior I-beam and is easily positioned against the flange of the support beam. The position of the M303 (for 3" I-beam) is secured by hand-tightening the nut; the weight of the suspended refractory roof locks it in place.

If you have any questions about Flange-Lok or its suitability for your application, please contact us.

We are ready to listen to your needs — no matter how complex



Merkle International, Inc.
9567 US Route 20 West
Galena, IL 61036, USA

+1.815.777.2100
sales@merkleintl.com
www.merkleintl.com